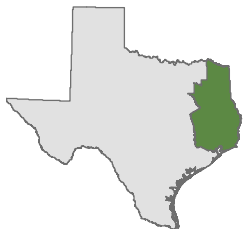
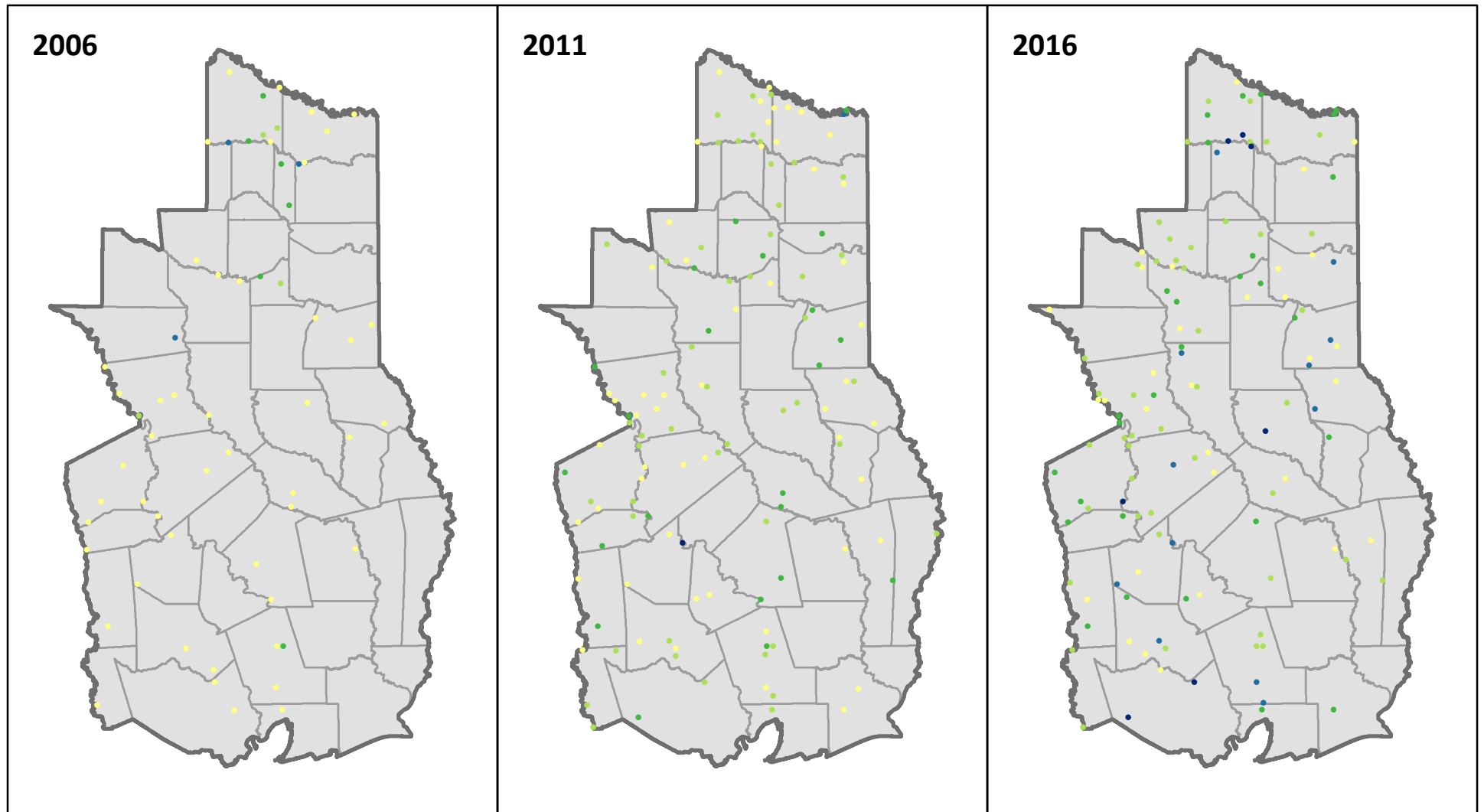


Hardwood Mortality on Elm-Ash-Cottonwood Forest, 2006 to 2016



FIA plots in East Texas from 2006, 2011, and 2016 inventories. Mortality is of hardwood trees at least 5 inches in diameter on elm-ash-cottonwood forest, expressed in number of trees per acre.

Data downloaded from FIA DataMart (<http://www.fia.fs.fed.us/tools-data>)



Forest Inventory & Analysis <http://www.fia.fs.fed.us>

Map prepared by Rebekah Zehnder, Texas A&M Forest Service (rzhender@tfs.tamu.edu)



TEXAS A&M
FOREST SERVICE