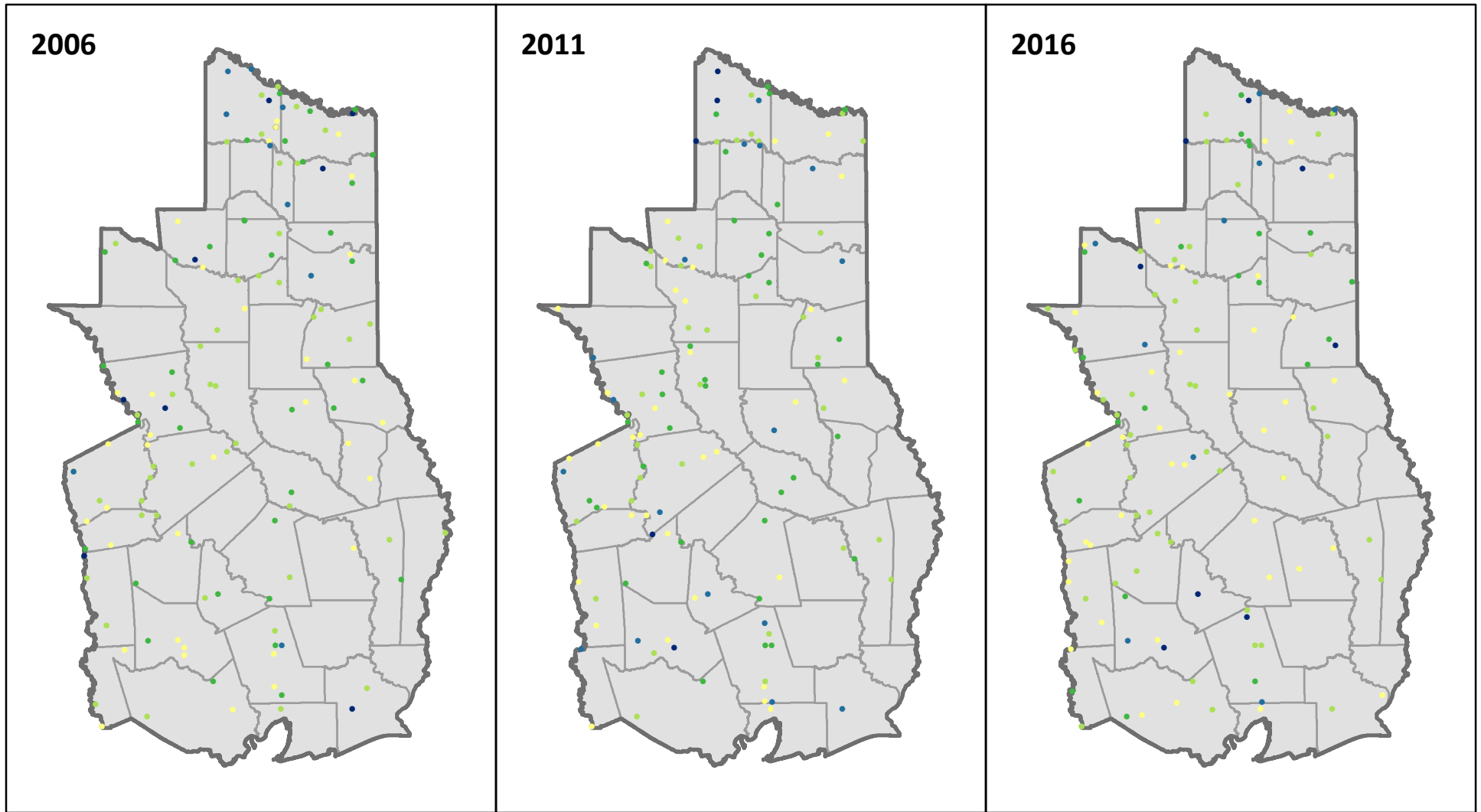


# All Live Stocking on Elm-Ash-Cottonwood Forest, 2006 to 2016



● 0 - 40   ● 41 - 60   ● 61 - 80   ● 81 - 100   ● 101 - 120

FIA plots in East Texas from 2006, 2011, and 2016 inventories. Stocking is percent stocking of all live trees at least 5 inches in diameter on elm-ash-cottonwood forest type group. If multiple types occurred on a plot, the one with the most area is shown.

Data downloaded from FIA DataMart (<http://www.fia.fs.fed.us/tools-data>)



Forest Inventory & Analysis <http://www.fia.fs.fed.us>

Map prepared by Rebekah Zehnder, Texas A&M Forest Service ([rzhender@tfs.tamu.edu](mailto:rzhender@tfs.tamu.edu))



**TEXAS A&M**  
FOREST SERVICE